



challenges
abroad

TANZANIA COMMUNITY CHALLENGE

www.challengesabroad.com.au



futureSense
FOUNDATION



About Us

Greater Social Equality. A More Sustainable Environment. A More Secure World for Everyone.



Challenges Abroad is a social enterprise that provides impactful customised overseas learning programs for students. Our mission is to develop the next generation of Global Citizens who as future leaders will help shape a better future for everyone.

We have had over **8,000** participants from both Australia and the UK join our programs!

The Challenges Abroad Difference



Creating a
community of
Global Citizens



Sustainable community
impact through our
partnership with the
FutureSense Foundation



Full pre-departure
support (on campus and
online), as well as 24/7
support in-country

Supporting our Charity

The FutureSense Foundation

Challenges Abroad supports international development through our partner charity, [the FutureSense Foundation](#). They have a team based in-country year-round that not only ensures that our programs form part of a sustainable development plan that will benefit the community long-term, but they also support you throughout your program. Our teams act as mentors in helping you develop key skills and competencies. Our partnership ensures that your work is meaningful and gives you a chance to make a real difference.



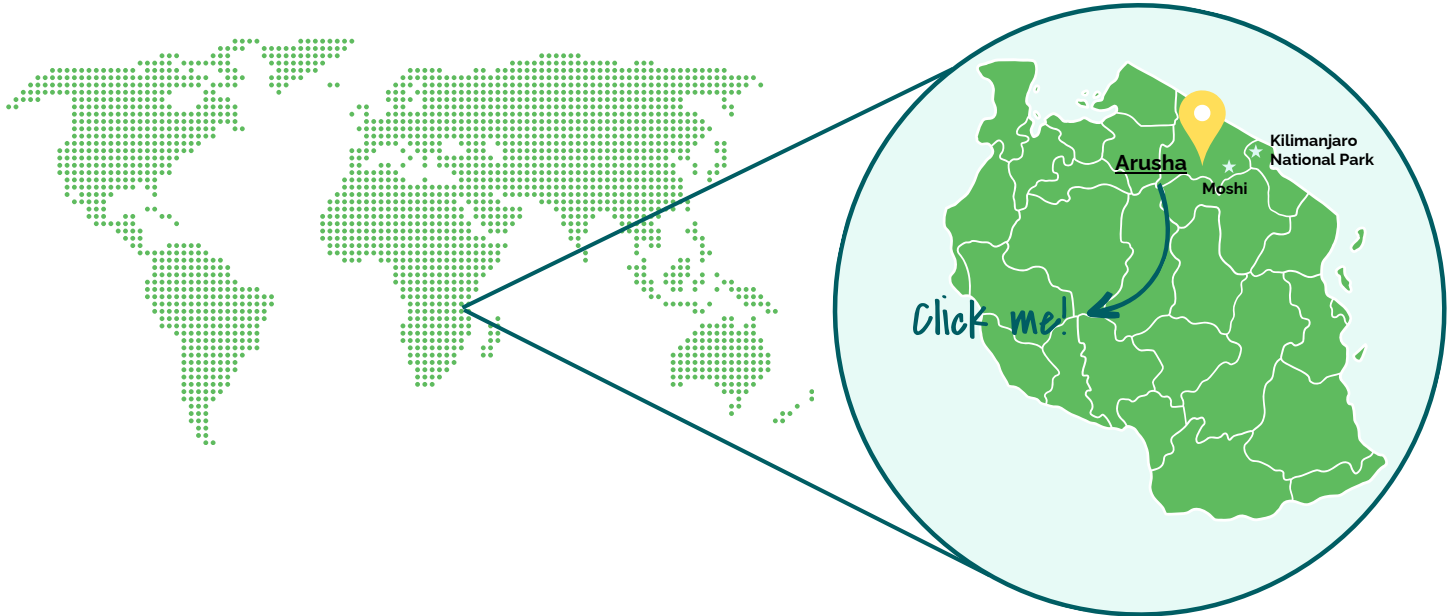
Going Carbon Neutral

We have partnered with an organisation called [Evergreen](#) to neutralise the carbon footprint generated by your trip. With Evergreen, we will be planting trees in Kenya and Nepal, supporting the local community in the area, generating employment and neutralising carbon emissions. In addition we encourage students to participate in activities such as tree planting and reducing their use of plastic.



The Essentials

Our Tanzania Community Challenge is the perfect opportunity to experience Tanzania's culture and heritage, make connections with the warm and welcoming locals, while making a difference on the lives of the local community...



Location:

Arusha,
Tanzania



Dates:

Dates TBC
through the
[website](#)



Cost:

\$2,850
(possible credit/funding
options [here](#))



Duration:

15 days



Extension trip:

Kilimanjaro Trek
\$3750



In Tanzania, schools face huge overcrowding issues, with the average primary school classroom holding 66 students. On top of this dropout rates are extremely high, with 57% of secondary school age children not enrolled at school.

By participating in this program, you'll be addressing these issues as you spend 2 weeks working at rural schools in Arusha, delivering a range of educational workshops. Supported by our team on the ground, you have the chance to take ownership of this program by using your skills to design hands-on and engaging activities. Your goal is to inspire young learners in their education!





Program Itinerary

Days 1 & 2: Saturday & Sunday

When you arrive at Kilimanjaro International airport, you'll be welcomed by a member of our team to kickstart your adventure! They'll take you to your accommodation, help you settle in and organise your welcome dinner. The next day you'll have a full orientation to your project and our team will show you around town so that you can get your bearings. There will be plenty of time to explore and get to know your new home!



Days 3-7: Monday - Friday

Monday will be your first day working with the local community! You will be working in our partner schools to deliver exciting workshops that inspire children in their education and help to build their confidence. You could be delivering workshops on topics such as conversational English, STEM, creative arts and environmental awareness. You might also work on a renovation project to help improve school facilities.

#leaveyourhandprintontheworld



Days 8 & 9: Saturday & Sunday

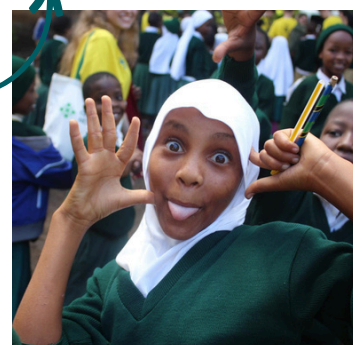
The weekend is free for you to explore! There is so much to do and see, like checking out the local Masai Market, visiting the Cultural Heritage Centre in Arusha or taking a dip in the beautiful and relaxing hot springs... just make sure you're back in time for Sunday dinner.



Days 10 - 14: Monday - Friday

This week will be structured the same as the week before. You might be working with the same community partner, or meeting new ones!

You will have evenings to prepare for workshops, and to relax or explore... we recommend some local drum lessons!



Day 15: Saturday

Today you'll either catch the morning transfer to the airport or continue with the extension trip!



Extension Trip Itinerary



Day 1: Today you will arrive at your accommodation in Moshi, where you will receive a pre-trek briefing. You will have the rest of the day free to relax, before an early start the following day.



Day 2: You'll be transferred by road to Machame gate, where you trek through the rain forest with your guide. The forest is thick and diverse with flora/fauna. A steady but relatively steep hike takes you to the edge of the forest and heather zone.



Day 3: Trekking through the heather & moorland zone up a steep ridge, you'll reach Picnic Rock. Here, you'll have excellent views of Kibo peak, the tallest mountain peak. The remainder of the day is a much gentler trail to your camp, where the views are equally as spectacular.



Day 4: You'll trek towards Kibo cone steadily climbing up and over the edges of the alpine desert until you reach Lava Tower. From here, there's a steep descent around Kibo and into the Barranco Valley, passing the large flowering mountain cacti unique to Kilimanjaro.



Day 5: You will ascend the Barranco wall, this gives a feeling of mountain climbing, which is rewarded with a superb view from the top of the Heim glacier. The remainder of the hike will be through the alpine desert slowly winding around the mountain until the Karanga valley.



Day 6: Today you will trek through the empty landscape of the alpine desert, this will be a short trek to camp, leaving plenty of time to rest and prepare for the summit attempt tonight.

Day 7: Early morning (around 00:00am) you begin your ascent to the summit of Uhuru peak. This is a steep trek over loose volcanic scree and takes a slow pace in a zig-zag pattern towards Stella point. You won't spend long at the peak due to the extreme altitude and will descend back to the camp for breakfast. Then, you'll continue through the alpine desert, stopping at Mweka camp for a well-deserved rest.

Day 8 & 9: This will be your final day of trekking, as you descend through the southern rain forest until Mweka gate where vehicles will be waiting to take you back to Moshi town. The next day you will be transferred to the airport to catch your flight home or continue your Global Citizenship journey elsewhere!



Details

Cost inclusions:

✓ Accommodation & meals

At our hub in Arusha, you will stay in shared dorm-style rooms and bathrooms. You'll likely be sharing your room with up to 4 other participants. While you will be provided with home comforts, these will be different to your usual standards, but all part of the challenge! We provide 3 vegetarian meals per day Monday-Friday (we can accommodate to further dietary requirements such as vegan, gluten free, nut free and other allergies), with weekends being your free time to explore local restaurants!

✓ In-country transport

Any required transport for project work, as well as airport transfers. Our team can also help you organise transport so you can explore the area in your free time.

✓ Pre-departure support

We will provide you with a Welcome Pack, Packing List and Program Brief to help you prepare for your travels. Our team are there every step of the way for extra support, and we'll organise a pre-departure meeting 6-weeks before you go to make sure everyone is on the same page and ready for the adventure.

✓ In-country support

As well as supporting you in your project work, our team will be a 24/7 contact for you during your time overseas... they'll also have the best recommendations on how to spend your free time!

Independent costs:

✿ International flights

✿ Travel insurance (might be covered by your university)

✿ Visas

✿ Vaccinations - refer to [smarttraveller.com.au](https://www.smarttraveller.com.au) and consult with your doctor

“

A once in a lifetime experience engaging with the people of Tanzania. Lovely country and lovely people. Thank you to my amazing team!

”

Global Citizen, Gregory

Follow us on:



@challengesabroad



@challengesabroad

Sign up!

All you need to do is apply on our [website](https://www.challengesabroad.com) and pay the \$250 booking deposit. Once accepted, you can pay the remainder of your program fee in fortnightly, monthly or quarterly instalments leading up to your challenge. Your final payment is due eight weeks before departure.

Our programs have limited numbers, and places fill quickly. Apply as soon as you're ready to avoid missing out!

If you have any questions or need any further support, please get in touch with our team:

chloe@challenge-sabroad.com.au



More food for thought...

What's in it for you...

This once in a lifetime program is the perfect opportunity to;



Meet other Global Citizens from across Australia



Develop transferrable skills such as teamwork, communication, problem solving, leadership, and adaptability



Make an impact on the world



Have an unforgettable experience

Become a Challenge Leader!

If you're keen to take on an extra challenge, becoming a challenge leader will help you develop your leadership and team management skills, as well as a whole heap of other qualities that will set you up for your career or future study.



Work with a leadership mentor to build your own community of people who care



Connect with other global leaders from across Australia



Attend 2 leadership weekend conferences in Melbourne



Have the opportunity to receive a discounted program



Ready to become a global leader? Find out more and apply [here](#).



challenges
abroad